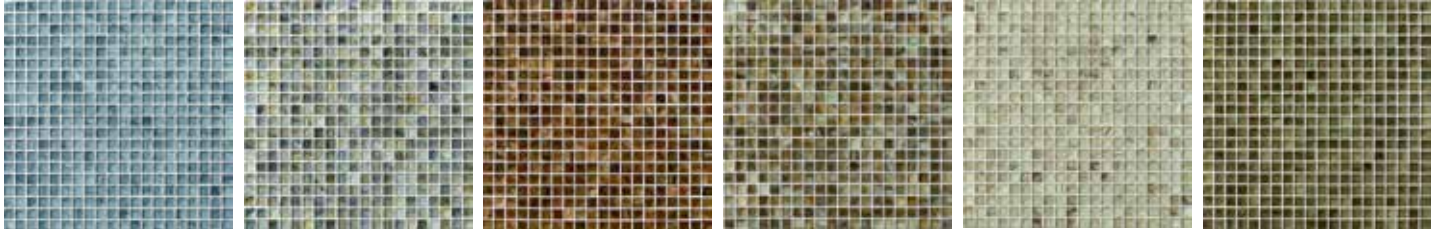


**MARAZZI**  USA

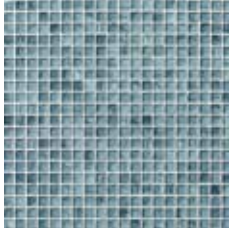
the fine art of porcelain stoneware

**(studio m)**

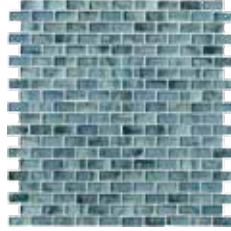
a collection of glass mosaics



Flamenco



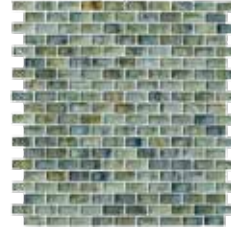
Flamenco



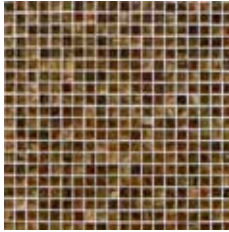
Jive



Jive



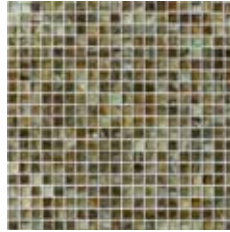
Samba



Samba



Tango



Tango



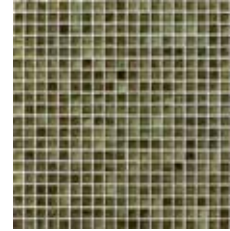
Swing



Swing





Waltz



Waltz



-  Floor Tile
-  Wall Tile
-  Decorative Tile
-  Suitable for Outdoor
-  Slight Variation
-  Frost Resistant
-  Abrasion Resistance
-  S.C.O.F. (Wet)
-  S.C.O.F. (Dry)
- 

DECOS*	
	
<b>13" x 13"</b> <small>(33.3x33.3 cm)</small>	<b>13" x 13"</b> <small>(33.3x33.3 cm)</small>
Mosaic-Square 1/2" x 1/2"	Mosaic-Brick 1 1/2" x 1/2"
Names (colors)	
Flamenco (blue)	UJ98 UJAE
Jive (multicolor)	UJ99 UJAF
Samba (rust)	UJ95 UJAB
Swing (ivory)	UJ97 UJAD
Tango (light green)	UJ94 UJAA
Waltz (dark green)	UJ96 UJAC

**ASTM Test Results**

Technical Characteristics	ASTM Standards	ASTM Test Results	ASTM Test Methods
Water Absorption	≤ 0.50%	≤ 0.50%	C373
Frost Resistance	As Reported	Resistant	C1026
Scratch Resistance	MOHS 1-10	7	MOHS Scale
Abrasion Resistance	Class 0 - Class V	Class I	C1027
DCOF-Dynamic Coefficient of Friction (Wet Areas Only) <sup>†</sup>	As Reported	Minimum 0.42	DCOF AcuTest <sup>SM</sup>
SCOF-Static Coefficient of Friction (Dry)	As Reported	0.60 ≤ C.O.F. < 0.70	C1028
SCOF-Static Coefficient of Friction (Wet)	As Reported	0.30 ≤ C.O.F. < 0.40	C1028
Chemical Resistance	Class A - Class E	Class A	C650
Stain Resistance	Class A - Class E	Class A	C1378

<sup>†</sup>Dynamic Coefficient of Friction (DCOF) - Water, oil, grease or other fluids create slippery conditions. When installing floors in areas with exposure to these conditions, a minimum D.C.O.F. value of 0.42 is required. Additionally, extra caution is required with regards to product selection and proper maintenance. Visit [www.tcnatile.com](http://www.tcnatile.com) for complete information regarding the DCOF AcuTest test method and values.  
<sup>‡</sup>DCOF AcuTest is the industry designation for the test procedure contained in ANSI A137.1 Section 9.6, which has been extensively researched, allows for in-situ field measurements, and is in use at tile manufacturing facilities. It was so named to distinguish it from other DCOF measurements using different instruments and/or protocols.  
 \*\* Whichever is less