

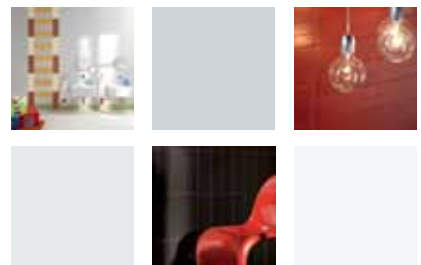
ARCHITECTURAL
TILE SOLUTIONS

CITTÁ

COLORS

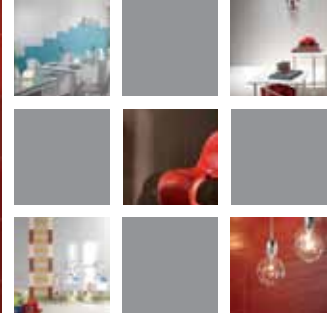


SystemTMC
Glazed Ceramic Wall Tile





SistemC Città | GLAZED CERAMIC WALL TILE



Finishes
Matte

Sizes
4" x 12"

Color Name	WALL TILE**	DECOS	TRIMS*
	4" x 12" Matte	4" x 12" Dimensional Insert	4" x 12" Bullnose
Agata_C	KYWR	MJ7Y	ULFD
Ametista_C	MIOX	MJ9Q	ULFG
Avorio_C	KYWT	MJ7X	ULFA
Bianco_C	KYWP	MJ7U	ULF6
Cemento_C	KYWS	MJ7V	ULF9
Cobalto_C	MIOY	MJ9N	ULFK
Creta_C	MIOU	MJ8B	ULFB
Fumo_C	MIOR		ULF8
Grigio_C	MIOQ		ULF7
Nero_C	KYWQ	MJ7W	ULFL
Ocra_C	MIOV	MJ8S	ULFE
Pistacchio_C	MJ09	MJ9B	ULFJ
Rosso_C	MIOV	MJ9P	ULFF
Tortora_C	MIOU	MJ7Z	ULFC
Turchese_C	MIOZ	MJ9M	ULFH



Wall Tile



Decorative Tile



Trim Available



Very Uniform Variation



Abrasion Resistance



20% Minimum Pre-Consumer Recycled Content



No VOC



Contributes to
LEED Credits

* Available in Matte finish, used for all finishes
** Due to size fluctuation, all measurements given are nominal. Where strict accuracy is required, please refer to actual tile samples.

ASTM Test Results

Technical Characteristics	ASTM Standards	ASTM Test Results Matte	ASTM Test Methods
Water Absorption	7.0% to 20%	7.5%	C 373
Frost Resistance	As Reported	Not Resistant	C 1026
Scratch Resistance	MOHS 1-10	5.5	MOHS Scale
Breaking Strength	≥ 125 lbf.	≥ 185 lbf.	C 648
Facial Dimension	-2.0% < Nominal ≤ 2.0%	Within Standard	C 499
Nominal Thickness	≤ 0.03 in (0.79 mm max)	Within Standard	C 499
Wedging (squareness)	≤ 0.40% or +/- 1.3 mm**	Within Standard	C 502
Warpage Edge (flatness)	-0.3% < Any Edge ≤ 0.4% or - 1.0 mm/ 1.3 mm**	Within Standard	C 485
Abrasion Resistance	Class 0 - Class V	Class II*	C 1027
Dry Coefficient of Friction	As Reported	N/A	C 1028
Wet Coefficient of Friction	As Reported	N/A	C 1028
Chemical Resistance	Class A - Class E	Class B	C 650
Stain Resistance	Class A - Class E	Class A	C 1378

* Abrasion Resistance / Suggested Applications
Class II Tile in this class may withstand soft-soled and some normal foot traffic provided the dirt and/or other abrasives are kept to a minimum. Class II tile should not be used in areas with direct access to the outside, large amounts of foot traffic, or areas exposed to abnormal footwear.
** Whichever is less